

Relationship between use of antidepressants and risk of fractures: a meta-analysis

V. Rabenda · D. Nicolet · C. Beaudart · O. Bruyère · J.-Y. Reginster

Received: 30 November 2011 / Accepted: 27 April 2012 / Published online: 26 May 2012

© International Osteoporosis Foundation and National Osteoporosis Foundation 2012

Abstract

Summary It has been shown that antidepressants would have a direct action on bone metabolism and would be associated with increased fracture risk. Results from this large meta-analysis show that both SSRIs and TCAs are associated with a moderate and clinically significant increase in the risk of fractures of all types.

Introduction This study seeks to investigate the relationship between use of antidepressants and the risk of fracture.

Methods An exhaustive systematic research of case–control and cohort studies published or performed between 1966 and April 2011 that reported risk estimates of fracture associated with use of antidepressants was performed using MEDLINE, PsycINFO, and the Cochrane Systematic Review Database, manual review of the literature, and congressional abstracts. Inclusion, quality scoring, and data abstraction were performed systematically by three independent reviewers.

Results A total of 34 studies ($n=1,217,464$ individuals) were identified. Compared with non-users, the random effects pooled RR of fractures of all types, among antidepressant users, were 1.39 (95%CI 1.32–1.47). Use of antidepressants were associated with a 42 %, 47 %, and 38 % risk increase in non-vertebral, hip, and spine fractures, respectively ([For non-vertebral fractures: RR=1.42, 95%CI 1.34–1.51]; [For hip fractures: RR=1.47, 95%CI 1.36–1.58]; [For spine fractures: RR=1.38, 95%CI 1.19–1.61]). Studies examining SSRI use showed systematically a higher increase

in the risk of fractures of all types, non-vertebral, and hip fractures than studies evaluating TCA use.

Conclusions Results from this large meta-analysis show that both SSRIs and TCAs are associated with a moderate and clinically significant increase in the risk of fractures of all types.

Keywords Antidepressants · Fractures · Meta-analysis · Selective serotonin-reuptake inhibitor · Tricyclic antidepressants

Introduction

Antidepressants are a class of drugs widely used around the world, with selective serotonin-reuptake inhibitors (SSRI) considered as first-line therapy for the treatment of depressive symptoms among older adults because of their presumed favourable adverse effect profile [1–3]. It has been shown that these treatments would be associated with a higher risk of falls [4–8] but would also have a direct action on bone metabolism [9–11]. Evidence from longitudinal, cross-sectional, and prospective cohort studies suggests that the use of antidepressants at therapeutic doses is associated with decreased bone mineral density (BMD) and increased fracture risk [10, 12–17]. These associations have been demonstrated in several distinct populations, using various study designs and with bone density, bone loss or fractures as outcomes, and are consistent after adjustment for confounding variables such as age, body mass index, lifestyle factors (alcohol, tobacco use), and history of fractures.

However, at present, the mechanism of action of antidepressants in the regulation of bone tissue is not fully understood. Whether antidepressants have the ability to increase the risk of falls, to reduce BMD, or both, has been a matter

V. Rabenda (✉) · D. Nicolet · C. Beaudart · O. Bruyère · J.-Y. Reginster
Department of Public Health, Epidemiology and Health Economics, University of Liège,
CHU—Bât. B23,
4000 Liège, Belgium
e-mail: veronique.rabenda@ulg.ac.be

of scientific debate for years, and this topic has been the subject of many studies. In 2005, Takkouche et al. published a meta-analysis showing that the pooled relative risk for fracture was 33 % higher for those exposed to an SSRI as compared to those exposed to a non-SSRI antidepressant [18]. However, this meta-analysis focused only on fractures at any site and on hip fractures. Moreover, since then, many studies aiming to investigate the relationship between the use of antidepressants and fractures have been published. To date, no comprehensive meta-analysis including these most recent data published in the literature has addressed the risk of fractures associated with the use of antidepressants. Moreover, to our knowledge, no pooled relative risk for non-vertebral and spine fractures has never been published.

In order to obtain an update of these data and a comprehensive overview of this field, we conducted a meta-analysis to quantitatively assess all available case-control and cohort studies that assessed the effect of antidepressants on the risk of fractures, which allowed us to gather more precise and accurate information on the relationship between the use of antidepressants and the risk of fractures.

Material and methods

Search strategy and data extraction

The Preferred Reporting Items for Systematic Reviews and Meta-analyses statement was followed [19]. A protocol was developed in advance to specify the research objective, search strategy, study eligibility criteria, and the methods of data extraction and statistical analysis. Sensitivity analysis was also prespecified.

We conducted a systematic literature search of MEDLINE from 1966 to April 2011, PsycINFO from 1967 to April 2011, and the Cochrane Systematic Review Database from 2005 to April 2011. The search terms were “antidepressant”, “antidepressive agents”, “selective serotonin-reuptake inhibitor”, “tricyclic antidepressant”, “monoamine oxidase inhibitors”, “psychotropic drugs”, “fractures”, “falls”, “bone density”, and “osteoporosis” (Appendix).

The computerized searches were supplemented by a manual search of relevant references of retrieved articles and of abstracts from major meetings of bone research or psychiatrics societies.

Eligible study and quality assessment

For the initial screening stage, two investigators (DN and CB) independently reviewed each title to exclude only the obviously irrelevant citations. After this first step, the two investigators independently reviewed each abstract of articles not excluded during the initial screening stage. In

both screening stages, the following simple relevant criteria were used: (1) human participants, (2) any antidepressants, SSRI or TCA, and (3) fractures of any type. Their disagreements were resolved by consensus (VR). This first study selection stage resulted in a total of 54 articles for eligibility for a full-text articles assessment. All potentially relevant articles were reviewed independently by three investigators (DN, CB, VR).

We included both case-control and cohort studies that reported the HR or the RR or the OR of fracture associated with use of antidepressants. Studies that did not provide risk estimates and confidence intervals but provided enough data to calculate them were included. Moreover, to be included, the outcome of interest must have been clearly defined as fracture. In other words, falls not followed by fractures were not included.

The quality of the studies was appraised with the Newcastle-Ottawa Scale, which is designed for observational studies [20]. The New Castle-Ottawa Scale is a nine-point scale that assigns points on the basis of the process of selection of the cohorts or of the case and of the controls (0–4 points), of the comparability of the cohorts or of the case and of the controls (0–2 points), and of the identification of the exposure and of the outcomes of study participants (0–3 points). Studies that achieved seven or more points were considered to be of high quality.

Data extraction

Data were independently extracted by three authors (DN, CB, VR) according to data extraction forms and checked for accuracy. The following study characteristics were recorded: (1) name of first author, (2) publishing year, (3) country in which the study was conducted, (4) study setting and design, (5) study population and baseline characteristics, (6) measures of outcomes and exposure, and (7) matching and adjustment factors. In addition to the descriptive information, all data needed for the statistical analysis, including relative risk (RR) estimates (in terms of odds ratio, OR; hazard ratio, HR), relative 95 % confidence intervals (95%CI), standard error (SE), or *p* value for each exposed group (or data useful to derive such estimates), were extracted from published reports.

Statistical analysis

Potential publication bias was explored by drawing a funnel plot. Publication bias was analysed using the Begg and Mazumdar [21] and Eger et al. tests [22]. If publication bias was detected, the effect of such bias was assessed with the fail-safe number method [23, 24]. The fail-safe number was the number of unpublished studies that would be needed to nullify the observed result to statistical non-significance at

the $\alpha=0.05$ level. Publication bias is generally regarded as a concern if the fail-safe number is less than $5n+10$, where n is the number of studies included in the meta-analysis. The results were examined for heterogeneity by using formal statistical tests for heterogeneity and trial inconsistency. Heterogeneity was assessed with Cochran's Q statistic ($p \leq 0.10$ indicating significance) and quantified using the I^2 statistic, which indicated the proportion of variability across studies that was due to heterogeneity rather than sampling error [25].

We assumed the presence of heterogeneity a priori, and we used random effects models. The odds ratio from case-control studies and the hazard ratios were assumed to provide a valid estimate of the relative risk, and consequently, were considered as an approximation of the relative risk. When available, adjusted estimates have been used in this meta-analysis. If a paper reported the results of different multivariate models, the most stringently controlled estimates (those from the model adjusting for more factors) were extracted.

We carried out separate analyses for each class of antidepressants (i.e. all antidepressants, SSRIs and TCAs) and for each type of fracture (i.e. all fractures, non-vertebral fractures, spine fractures, and hip fractures). In studies where multiple fracture sites or several classes of antidepressants were analysed and no overall RR or OR was given, the reported results were pooled. For the "non-vertebral fractures" analyses, we included studies reporting at least one of the following non-vertebral fractures data: hip, femur, femoral neck, non-spine fracture, humeral fracture, pelvic fracture, wrist, Colle's fracture, and lower limb.

To evaluate the impact of individual studies on the overall results, we performed a one-way sensitivity analysis by omitting one study at a time, and repeating the analysis. We were not able to perform meta-regression analysis to examine the variation in antidepressant effect attributable to prespecified variables. In fact, some important variables were not available in the original studies, limiting the number of studies that would be included in the meta-regression analysis. However, to explore the origin of heterogeneity, analyses were stratified by study quality score (NOS score <7 vs ≥ 7), study design (case-control vs cohort studies) and by the adjustment or not of the RR (crude RR vs adjusted RR). In addition, to assess whether the effect of antidepressants on fracture risk was modified by demographic or clinical variables, a list of subgroup analysis was specified. These variables were chosen on the basis of known risk factors or biological plausibility, such as gender, age, ethnicity, study location, adjustment or not for BMD, or depression. We were not able to conduct subgroup analysis for ethnicity since some studies used multi-ethnic groups and others did not specify the variable. For the analysis of the risk of factor of age, we conducted one post hoc analysis by including studies with participants aged of 50 years or more only. Other potential sources of the variation, such as

type of drug, dose of drug, duration of exposure, and time since last use, were available in a limited number of studies and categories used were mixed, so that we could not calculate a summary estimate.

Results were regarded as statistically significant if $p < 0.05$. All analyses were done with Comprehensive Meta-Analysis software.

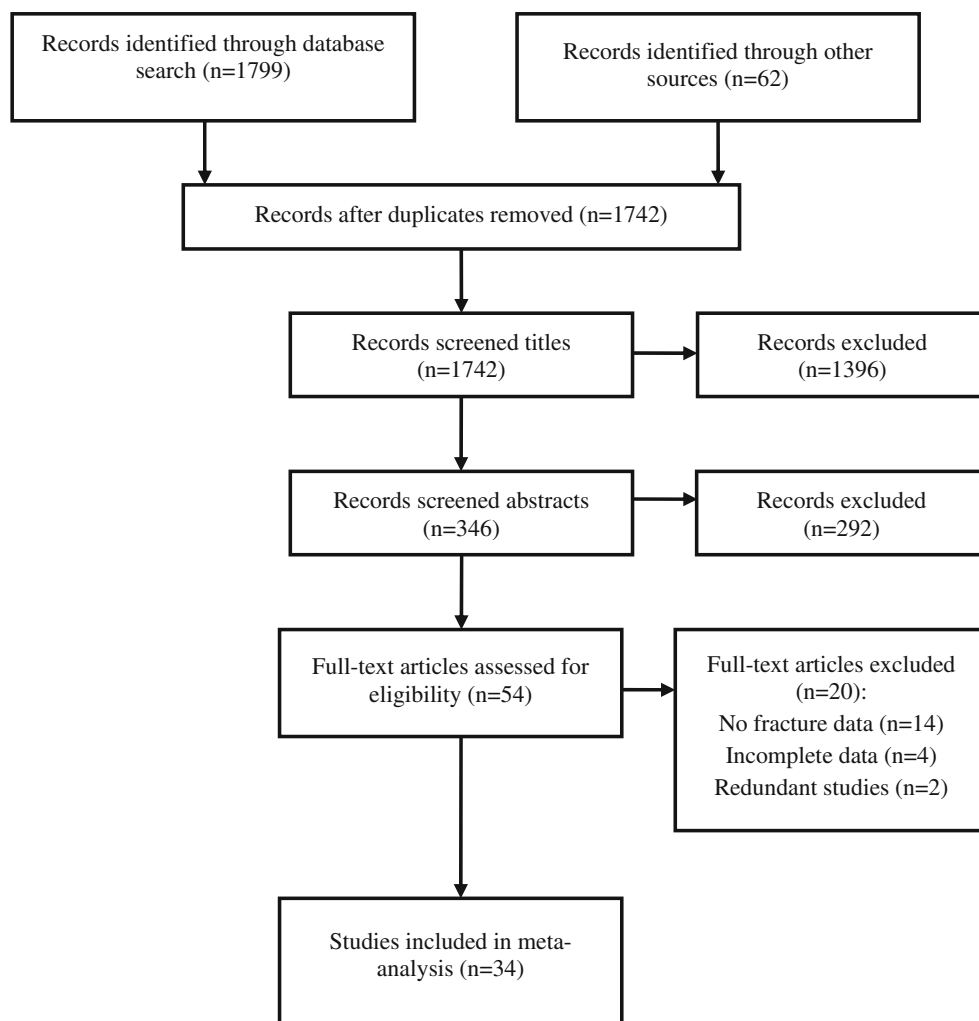
Results

A total of 34 studies ($n=1217464$ individuals) were identified that satisfied the inclusion criteria (Fig. 1) [26–59]. Results of Vestergaard et al. were reported in two papers [40, 41] but were considered as one study in the analyses and, in consequence, analyses included 33 studies. Characteristics of the 33 studies included in the meta-analysis are presented in Table 1. Twenty studies were case-control studies [26–46] and 13 studies were cohort studies [47–59]. A total of 26 studies reported data on non-vertebral fractures (including wrist, Colle's, femur, hip, femoral neck...) [26–40, 44, 45, 47–50, 54, 55, 57–59], 19 studies on hip fractures [26, 28–30, 33–36, 38–40, 44, 45, 47–49, 54, 58, 59], and 3 studies reported data on spine fractures [40, 44, 54]. Sixteen and fourteen studies reported data specifically on SSRI [32, 33, 36, 38, 41, 42, 44–46, 49–51, 54, 55, 58, 59] or TCA use [26, 28, 33, 36, 38, 41, 45, 46, 49–51, 55, 58, 59], respectively.

In seven studies, the antidepressant use was divided into categories of user (current user, recent user, past user...) [26, 28, 30, 42, 45, 46, 55]. In this case, only the results of the current users' category were taken into account. In the Ray et al. study [28], the authors reported results for cyclic antidepressants, without distinguishing tricyclic antidepressants and tetracyclic antidepressants. In our analyses, we considered these results as being tricyclic antidepressants. In the study conducted by Perreault et al. [43], the authors performed two nested case-control analysis using two sub-cohorts of women; a sub-cohort of women with a diagnosis of osteoporosis and a sub-cohort of women with a prior fracture. In our analyses, we used data coming from the sub-cohort of women with a diagnosis of osteoporosis. In one study [57], the referent group was an "atypical antipsychotics users" group, and not a "non-users" group, as it is the case in most of the studies. In other study [59], the referent group was a "secondary amine tricyclics users" group.

Most of the studies (73 %) achieved seven or more points in the NOS scale and were considered to be of high quality (Table 2). Egger's regression analysis showed that publication bias was not present ($p=0.06$; Fig. 2).

Globally, there was a moderate but significant increase in the risk of fractures of all types among antidepressant users. Compared with non-users, the random effects pooled RR of

Fig. 1 Flowchart of study selection

fractures of all types, among antidepressant users, were 1.39 (95%CI 1.32–1.47; Table 2). The results were unchanged when individual trials were removed singly (yielding 33 sensitivity models, one model for each trial that was dropped). The Q statistic for heterogeneity was significant ($p < 0.0001$), with the I^2 value of 84.5 %. Heterogeneity subsided when we stratified the analysis by study design (case–control vs cohort studies) and we did not find any evidence of substantial difference in pooled RRs according to study design ([For case–control studies: RR=1.40, 95%CI 1.31–1.49]; [For cohort studies: RR=1.37, 95%CI 1.23–1.52]; Table 2). Restricting the analysis to the studies that scored ≥ 7 on the quality score, to the studies reporting adjusted RR or to the studies including persons aged ≥ 50 years did not alter the results ([For studies with NOS score ≥ 7 : RR=1.38; 95%CI 1.31–1.47]; [For studies with adjusted RR: RR=1.38, 95%CI 1.29–1.48]; [For studies with persons ≥ 50 years: RR=1.37, 95%CI 1.27–1.47]; Table 2). A less pronounced increase in fracture risk was observed in studies with adjustment for depression or BMD and for studies including only women (Table 2).

Limiting the analysis to non-vertebral, hip, or spine fractures did not produce any substantial change in the results. Use of antidepressants was associated with a 42 %, 47 %, and 38 % risk increase in non-vertebral, hip, and spine fractures, respectively ([For non-vertebral fractures: RR=1.42, 95%CI 1.34–1.51]; [For hip fractures: RR=1.47, 95%CI 1.36–1.58]; [For spine fractures: RR=1.38, 95%CI 1.19–1.61]; Table 2).

Studies examining SSRI use showed systematically a higher increase in the risk of fractures of all types, non-vertebral, and hip fractures than studies evaluating TCA use. Use of SSRI was associated with a 61 %, 65 %, 64 %, and 22 % risk increase in fractures of all types, non-vertebral, hip, and spine fractures, respectively ([For fractures at any site: RR=1.61, 95%CI 1.49–1.74]; [For non-vertebral fractures: RR=1.65, 95%CI 1.44–1.89]; [For hip fractures: RR=1.64, 95%CI 1.42–1.89]; [For spine fractures: RR=1.22, 95%CI 1.05–1.42]; Table 3). The pooled RRs from studies on TCA indicated an increase of 40 %, 42 %, and 43 % in the risk of fractures of all types, non-vertebral and hip fractures, respectively ([For fractures at any site: RR=

Table 1 Characteristics of the included studies

| References | Design study | Population | Exposure | Outcome | Cases/controls or cohort size | Matching and adjustment factors |
|--------------------------------------|--------------|---|-----------------------------|--------------|-------------------------------|--|
| Ray et al. [26], USA | CC | Elderly population (65 years of age or older) enrolled in Medicaid | TCA | Hip | 1021/5606 | Matching: Age/sex/race/index year/home status |
| Jensen et al. [27], Denmark | CC | Persons over 59 years old | AD | Femoral neck | 200/200 | Matching: Age/sex/nursing home residency/number of admissions within the last 2 years |
| Ray et al. [28], Canada | CC | Elderly population (65 years and over) dwelling in the community | TCA (tri- and tetra-cyclic) | Hip | 4501/24041 | Matching: Birth year/sex/index date Adjustment: Age/sex/calendar year/nursing home residence on the index date/hospitalization and use of specific medication in the year preceding the index date Adjustment: Age/sex/type of residence |
| Cummings et al. [29], Australia | CC | Elderly population (65 years and over) living in a defined area in western Sydney | AD | Hip | 209/207 | |
| Lichtenstein et al. [30], Canada | CC | Elderly population (65 years of age or older) identified from a previously reported population-based case-control study of hip fracture | AD | Hip | 129/234 | Matching: Age/sex Adjustment: Age/sex/vision impaired/ambulatory status/dementia/confusion/weight |
| Herings et al. [31], the Netherlands | CC | General population (45 years and older) data from the PHARMO record linkage system | AD | Femur | 386/386 | Matching: Age/sex/pharmacy/general practitioner |
| Gambassi et al. [32], USA | CC | Elderly population living in a nursing home of 5 US states | SSRI | Femur | 8851/35086 | Matching and adjustment not given |
| Liu et al. [33], Canada | CC | Elderly population (66 years and older) | SSRI, TCA | Hip | 8239/41195 | Matching: Age/sex Adjustment: Comorbidity/previous drug exposure |
| Wang et al. [34], USA | CC | Individuals (65 years and older) enrolled in Medicare and in Medicaid or the pharmaceutical assistance to the Aged and Disabled program of New Jersey | AD | Hip | 1222/4888 | Matching: Year of birth/sex Adjustment: Age/sex/race/comorbidity illness severity/prior use of other psychoactive medications/prior hospitalization/prior nursing home use |
| Partanen et al. [35], Finland | CC | Post-menopausal women (age range: 53–84 years) | AD | Hip | 74/40 | Matching: Age/sex/geographical area |
| Hubbard et al. [36], UK | CC | Patients data from the GPRD | TCA, SSRI | Hip | 16341/29889 | Matching: Age/sex/general practice/duration of available GPRD data Adjustment: History of falls/prescription for hypnotics and antipsychotics |
| Kaye et al. [37], UK | CC | General population data from the GPRD | AD | Lower limb | 32827/65295 | |

Table 1 (continued)

| References | Design study | Population | Exposure | Outcome | Cases/controls or cohort size | Matching and adjustment factors |
|--------------------------------------|--------------|--|----------------------|-------------------------------|-------------------------------|---|
| French et al. [38], USA | CC | Patients (age range:30–101 years) admitted to VHA hospitals | AD, TCA, SSRI, Other | Hip | 2212/4424 | Matching: Year of birth/sex/general practice/index date/duration of follow-up time in the GPRD Adjustment: Diagnoses (Osteoporosis, Parkinsonism, Alcoholism, Cataract, Dementia, Epilepsy, Cancer, Obesity, Rheumatoid arthritis, Osteoarthritis, Road collision)/corticosteroids use/antipsychotics use/hypnotics and sedatives use/smoking status, BMI Matching: Age/sex |
| Hughenoltz et al. [39], UK | CC | General population (≥ 18 years) data from the GPRD | AD | Hip | 22250/22250 | Matching: Year of birth/sex/medical practice |
| Vestergaard et al. [40, 41], Denmark | CC | Danish population (all ages) | AD, TCA, SSRI, Other | Any site, Hip, Colle's, Spine | 124655/ 373962 | Matching: Age/sex Adjustment: Use of anxiolytics, sedatives, neuroleptics/schizophrenia/ manic-depressive states/other psychoses/use of corticosteroids and antiepileptic/number of bed days in 1999/number of contacts to general practitioners or specialists in 1999/Charlson index/working or not/income in 1999/living with another person vs. alone |
| Bolton et al. [42], Canada | CC | General population (50 years and older) data from administrative health database | SSRI, Other | Any site | 15792/47289 | Matching: Age/sex/ethnicity/comorbidity index Adjustment: Demographic variables (income quintile, region of residence, interaction of income quintile and region of residence)/medications/physical conditions/mental disorders |
| Perreault et al. [43], Canada | CC | Elderly women (70 years and older) with a diagnosis of osteoporosis from the Quebec health databases | AD | Any site | 1824/18240 | Matching: Age/time period/BMD testing/diagnosis of osteoporosis in the 5 year period before the index Adjustment: Time since the diagnosis of osteoporosis/site of residency/number of medical visits/number of physician prescribers/risk of fall/use of long acting benzodiazepines, |

Table 1 (continued)

| References | Design study | Population | Exposure | Outcome | Cases/ controls or cohort size | Matching and adjustment factors |
|--|--------------|--|----------------------|----------------------|--------------------------------------|--|
| Abrahamsen et al. [44], Denmark | CC | Men (50 years and older) data from the Danish National Hospital Discharge Register and the National Prescriptions Database | AD, SSRI | Any site, Hip, Spine | 15716/47149 | antidepressants, anticonvulsants, narcotics/diagnosis of diabetes Matching: Age/sex Adjustment: Fracture history/age/Charlson comorbidity index |
| van den Brand et al. [45], the Netherlands | CC | General population (≥ 18 years) data from Dutch PHARMO Record Linkage System database | SSRI, TCA | Hip | 6763/26341 | Matching: Age/sex/geographical region Adjustment: Current use of an AD other than SSRI or TCA/use of benzodiazepine, oral corticosteroids, hormone replacement therapy, antipsychotics, beta-blockers, opioids, anticonvulsants, drugs for diabetes, ≥ 2 NSAIDs, DMARDs and metoprolamide/a history of malignant neoplasms, mental disorders, cerebrovascular diseases, obstructive airway diseases or inflammatory bowel diseases |
| Verdel et al. [46], the Netherlands | CC | General population (≥ 18 years) data from Dutch PHARMO Record Linkage System database | AD, SSRI, TCA, Other | Any site | 9943/36359 | Matching: Year of birth/gender/geographical area/index date Adjustment: Cancer/cardiovascular disease/cerebrovascular disease/inflammatory bowel disease/mental disorders/obstructive airway disease/use of antidiabetics, antiepileptics, antiparkinson drugs, benzodiazepines, beta-blocking agents, DMARDs, hormone replacement therapy, NSAIDs, oral glucocorticoids and opioids |
| Guo et al. [47], Sweden | CH | Inhabitants (75 years and older) of the Kungsholmen district of Stockholm | AD | Hip | 1608 | Adjustment: Age/sex/education/institution as residence/limitation in ADL/visual problem/history of stroke/history of a tumor/cognitive impairment |
| Jacquin-Gadda et al. [48], France | CH | Elderly population (65 years and older) from 2 areas in south-western France, selected from the Paquid | AD | Hip; non-hip | 3216 | Adjustment: Age/BMI/sex/tobacco consumption/spirits consumption/profession/use of psychotropic drugs/administrative area/presence |

Table 1 (continued)

| References | Design study | Population | Exposure | Outcome | Cases/controls or cohort size | Matching and adjustment factors |
|--|--------------|--|------------------|--------------------------------|-------------------------------|---|
| Ensrud et al. [49], USA | CH | cohort study on mental and physical aging Elderly (at least 65 years) community-dwelling women from 4 areas of the US | AD, SSRI, TCA | Non-spine; hip | 8127 | of dementia/design variables (interview vs postal questionnaire) Adjustment: Age/health status/medical conditions/walking for exercise/functional impairment/fall in previously year/cognitive function/weight change/gait speed/inability to rise from a chair/smoking/depression |
| Lewis et al. [50], USA | CH | Elderly men (65 years and older) from 6 communities in the US | SSRI, TCA | Non-spine | 5876 | Adjustment: Age/BMD |
| Richards et al. [51], Canada | CH | Community-dwelling adults (50 years and older) | SSRI, TCA | Any site | 5008 | Adjustment: Age/total hip BMD/modified Charlson index/prevalent vertebral deformity/prevalent fragility fractures at baseline/cumulative lifetime oestrogen use in women |
| Spector et al. [52], USA | CH | Nursing home residents (65 years and older) enrolled in the MEPS | AD | Any site | 2711 | Adjustment: Resident characteristics/prescribed medications/facility characteristics |
| Cooper et al. [53], European countries | CH | Postmenopausal women enrolled in the OSSO | AD | Any site | 1885 | Not applicable |
| Spangler et al. [54], USA | CH | Postmenopausal women (50–79 years old) enrolled in the WHI study | AD, SSRI | Any site Hip Spine Wrist Other | 93676 | Adjustment: Age/weight/height/ethnicity/years since menopause/physical function/exercise/current smoking/CVD/use of analgesic or narcotic/previous fracture |
| Ziere et al. [55], the Netherlands | CH | All persons (55 years and older) enrolled in the Rotterdam study | SSRI, TCA, Other | Non-vertebral | 7983 | Adjustment: Age/sex/depression during follow up period/disability category/lower-limb disability |
| Nurminen et al. [56], Finland | CH | Elderly population (65 years and older) living in the municipality of Lieto, South-Western Finland | AD | Any site | 1177 | Adjustment: Age |
| Huyberchts et al. [57], Canada | CH | Elderly patients (65 years and older) newly admitted in a nursing home in the province of British Columbia | AD | Femur | 10900 | Adjustment: Age/sex/calendar year/level of care assigned at the time of admission to a nursing home/clinical conditions/psychiatric comorbidity/other comorbidity condition/Charlson comorbidity index/number of physician visits |

Table 1 (continued)

| References | Design study | Population | Exposure | Outcome | Cases/controls or cohort size | Matching and adjustment factors |
|------------------------|--------------|---|------------------|---|-------------------------------|---|
| Diem et al. [58], USA | CH | Community-dwelling women (65 years and older) from 4 US clinical centers recruited for participation in the SOF | SSRI, TCA | Non-vertebral; hip; wrist | 8217 | for any reason/number of hospital admissions for any reason and of any length/number of prescription drugs/prior specialist care Adjustment: Age/Health status/IADLs/ability to rise from a chair/m-MMSE/smoking/ alcohol use/estrogen use/biphosphonate use/ benzodiazepine use/thiazide use/proton pump inhibitor use/oral steroid use/weight/GDS score/walks for exercise/history of prior fracture/total-hip BMD |
| Gagne et al. [59], USA | CH | Elderly (mean age: 76 years) Medicare beneficiaries from 2 US states | SSRI, TCA, Other | Non-vertebral; hip; humerus; pelvis; radius | 10844 | Adjustment: Age/sex/race/health service-utilization information/Charlson comorbidity index score/psychiatric disorders/risk factors for fracture |

CC case-control study, CH cohort study, AD antidepressant, SSRI selective serotonin reuptake inhibitor, TCA tricyclic antidepressant, GPRD General Practice Research Database, IADL independent activities of daily living, m-MMSE modified Mini-Mental State Examination, GDS geriatric depression scale, BMD bone mineral density, SOF Study of Osteoporotic Fractures, BMI body mass index, NSAIDs non-steroidal anti-inflammatory drugs, DMARDs disease-modifying anti-rheumatic drugs, VHA Veterans Health Administration, ADL activities of daily living, CVD cardiovascular disease, MEPS Medical Expenditure Panel Survey, OSSO Observational Study of Severe Osteoporosis, WHI Women's Health Initiative Observational Study

Table 2 Summary of the results of the meta-analysis: relative risk of fracture associated with use of any antidepressants in overall and in subgroups defined by characteristics of study design, quality score, confounder adjustment, age, sex, study location, and fracture site

| Analyses | Number of studies | Random effects | I^2 statistics (Heterogeneity) | Q test p value |
|---|-------------------|------------------|----------------------------------|--------------------|
| Overall | 33 | 1.39 (1.32–1.47) | 84.47 | <0.0001 |
| Study design | | | | |
| CC study | 20 | 1.40 (1.31–1.49) | 89.10 | <0.0001 |
| CH study | 13 | 1.37 (1.23–1.52) | 57.17 | <0.01 |
| Quality score | | | | |
| NOS score <7 | 8 | 1.45 (1.23–1.70) | 66.44 | <0.01 |
| NOS score \geq 7 | 25 | 1.38 (1.31–1.47) | 87.04 | <0.0001 |
| Confounder adjustment | | | | |
| Crude RR | 7 | 1.47 (1.29–1.69) | 62.38 | <0.05 |
| Adjusted RR | 26 | 1.38 (1.29–1.48) | 86.57 | <0.0001 |
| Adjusted for BMD | | | | |
| Yes | 4 | 1.22 (1.04–1.42) | 73.69 | <0.05 |
| No | 28 | 1.41 (1.33–1.49) | 84.98 | <0.001 |
| Adjusted for depression | | | | |
| Yes | 6 | 1.30 (1.15–1.47) | 18.82 | 0.29 |
| No | 26 | 1.41 (1.33–1.50) | 87.04 | <0.001 |
| Population \geq 50 years ^a | 32 | 1.37 (1.27–1.47) | 82.31 | <0.001 |
| Gender | | | | |
| Women | 6 | 1.29 (1.16–1.45) | 81.60 | <0.001 |
| Men | 2 | 1.40 (1.14–1.73) | 70.42 | 0.07 |
| Men and women | 24 | 1.42 (1.33–1.52) | 85.75 | <0.001 |
| Study location | | | | |
| USA | 10 | 1.36 (1.23–1.50) | 59.55 | <0.01 |
| International | 23 | 1.41 (1.32–1.51) | 87.97 | <0.001 |
| Fracture site | | | | |
| Non-vertebral fractures | 26 | 1.42 (1.34–1.51) | 80.42 | <0.0001 |
| Hip fractures | 19 | 1.47 (1.36–1.58) | 85.80 | <0.0001 |
| Spine fractures | 3 | 1.38 (1.19–1.61) | 64.09 | 0.062 |

^a This analysis included studies that included persons aged \geq 50 years

Fig. 2 Funnel plot to assess publication bias. *Circles* indicate individual studies. *Diamond* indicates summary estimates

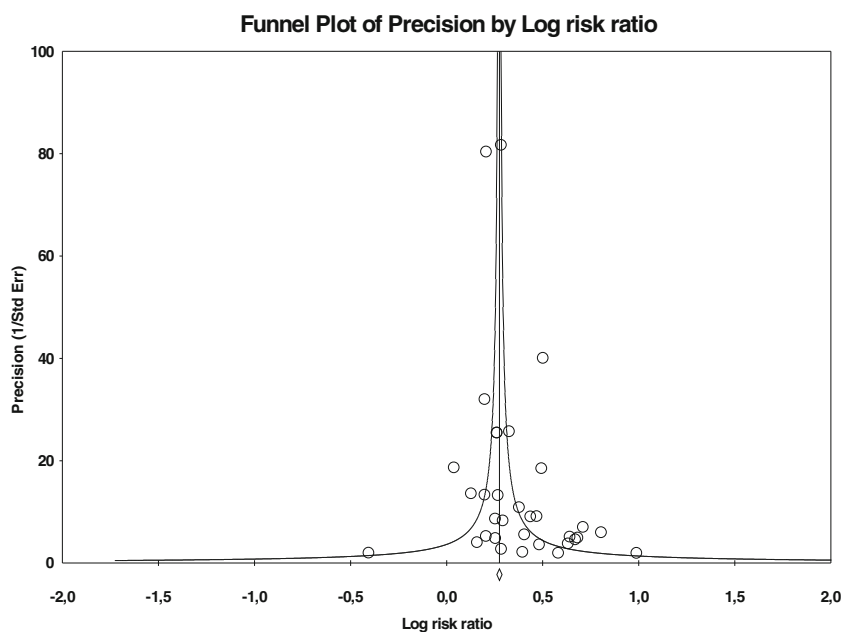


Table 3 Summary of the results of the meta-analysis: relative risk of fracture associated with use of SSRI in overall and in subgroups defined by characteristics of study design, quality score, confounder adjustment, age, sex, study location, and fracture site

| Analyses | Number of studies | Random effects | I^2 statistics (Heterogeneity) | Q test p value |
|---|-------------------|------------------|----------------------------------|--------------------|
| Overall | 16 | 1.61 (1.49–1.74) | 89.54 | <0.0001 |
| Study design | | | | |
| CC study | 9 | 1.70 (1.55–1.87) | 93.20 | <0.0001 |
| CH study | 7 | 1.42 (1.23–1.64) | 28.45 | 0.211 |
| Quality score | | | | |
| NOS score <7 | 3 | 1.44 (1.13–1.83) | 11.64 | 0.322 |
| NOS score \geq 7 | 13 | 1.63 (1.50–1.78) | 91.33 | <0.0001 |
| Confounder adjustment | | | | |
| Crude RR | 1 | 1.54 (1.16–2.03) | NA | NA |
| Adjusted RR | 15 | 1.62 (1.49–1.77) | 90.23 | <0.0001 |
| Adjusted for BMD | | | | |
| Yes | 3 | 1.51 (1.17–1.96) | 41.10 | 0.18 |
| No | 12 | 1.62 (1.49–1.76) | 92.08 | <0.001 |
| Adjusted for depression | | | | |
| Yes | 5 | 1.41 (1.21–1.65) | 40.55 | 0.15 |
| No | 10 | 1.69 (1.54–1.87) | 92.61 | <0.001 |
| Population \geq 50 years ^a | 10 | 1.56 (1.38–1.77) | 90.5 | <0.001 |
| Gender | | | | |
| Women | 3 | 1.33 (1.08–1.63) | 0 | 0.86 |
| Men | 2 | 1.69 (1.30–2.20) | 0 | 0.92 |
| Men and women | 10 | 1.68 (1.51–1.86) | 92 | <0.001 |
| Study location | | | | |
| USA | 7 | 1.41 (1.23–1.61) | 45.68 | 0.09 |
| International | 9 | 1.75 (1.58–1.94) | 93.37 | <0.001 |
| Fracture site | | | | |
| Non-vertebral fractures | 12 | 1.65 (1.44–1.89) | 92.87 | <0.0001 |
| Hip fractures | 9 | 1.64 (1.42–1.89) | 91.23 | <0.0001 |
| Spine fractures | 2 | 1.22 (1.05–1.42) | 0 | 0.805 |

NA not applicable

^a This analysis included studies that included persons aged \geq 50 years

1.40, 95%CI 1.29–1.51]; [For non-vertebral fractures: RR=1.42, 95%CI 1.27–1.58]; [For hip fractures: RR=1.43, 95%CI 1.28–1.61]; Table 4). As well as for studies reporting specifically data on SSRI use than for studies reporting data on TCA use, heterogeneity was large. Restricting the analysis to the studies that scored \geq 7 on the quality score or to the studies reporting adjusted RR or to the studies including persons aged \geq 50 years did not alter the results (Tables 3 and 4). In addition, a less pronounced increase in fracture risk associated with SSRI or TCA use was observed in all subgroups, particularly in studies with cohort design, adjustment for depression or BMD, including women only, and conducted in USA. Moreover, the results were unchanged when individual trials were removed singly as well as for studies reporting specifically data on SSRI use than for studies reporting data on

TCA use (yielding 16 sensitivity models for studies reporting data on SSRI use and 14 sensitivity models for studies reporting data on TCA use).

Discussion

This meta-analysis is a comprehensive examination of the effect of antidepressants, including TCAs and SSRIs, on fracture risk at any site, and also specifically on non-vertebral, hip, and spine fractures, based on all available cases–controls and cohort studies that were conducted in a wide range of populations and geographic regions. Our results indicate that antidepressants use is associated with a moderate and clinically significant increase in the risk of fractures of any type. The increase in risk was consistent in

Table 4 Summary of the results of the meta-analysis: relative risk of fracture associated with use of TCA in overall and in subgroups defined by characteristics of study design, quality score, confounder adjustment, age, sex, study location, and fracture site

| Analyses | Number of studies | Random effects | I^2 statistics (Heterogeneity) | Q test p value |
|---|-------------------|-------------------|----------------------------------|--------------------|
| Overall | 14 | 1.40 (1.29–1.51) | 81.21 | <0.0001 |
| Study design | | | | |
| CC study | 8 | 1.46 (1.34–1.58) | 83.16 | <0.0001 |
| CH study | 6 | 1.21 (1.05–1.40) | 57.79 | <0.05 |
| Quality score | | | | |
| NOS score <7 | 2 | 1.12 (0.89–1.40) | 85.15 | <0.01 |
| NOS score \geq 7 | 12 | 1.43 (1.33–1.54) | 76.46 | <0.0001 |
| Confounder adjustment | | | | |
| Crude RR | 2 | 1.57 (1.25–1.97) | 33.39 | 0.22 |
| Adjusted RR | 12 | 1.38 (1.27–1.50) | 83.54 | <0.0001 |
| Adjusted for BMD | | | | |
| Yes | 3 | 1.28 (1.01–1.63) | 56.35 | 0.10 |
| No | 11 | 1.41 (1.30–1.53) | 83.88 | <0.001 |
| Adjusted for depression | | | | |
| Yes | 3 | 1.31 (1.06–1.61) | 18.14 | 0.30 |
| No | 11 | 1.41 (1.30–1.54) | 84.52 | <0.001 |
| Population \geq 50 years ^a | 9 | 1.39 (1.22–1.57) | 75.01 | <0.001 |
| Gender | | | | |
| Women | 2 | 1.26 (1.004–1.57) | 23.75 | 0.25 |
| Men | 1 | 2.39 (1.23–4.65) | NA | NA |
| Men and women | 11 | 1.41 (1.30–1.53) | 84 | <0.001 |
| Study location | | | | |
| USA | 6 | 1.32 (1.15–1.50) | 76.98 | <0.01 |
| International | 8 | 1.44 (1.31–1.59) | 82.57 | <0.001 |
| Fracture site | | | | |
| Non-vertebral fractures | 11 | 1.42 (1.27–1.58) | 81.89 | <0.0001 |
| Hip fractures | 9 | 1.43 (1.28–1.61) | 80.62 | <0.0001 |
| Spine fractures | 0 | – | – | – |

NA not applicable

^a This analysis included studies that included persons aged \geq 50 years

sensitivity analyses, in which studies were included on the basis of different criteria.

The exact mechanism by which antidepressant drugs increase the risk of fracture in the elderly has not yet been elucidated, and the mechanism may differ across the classes of antidepressants. TCAs have been postulated to increase the risk of fractures due to an increased risk of falls, attributed to sedation, orthostatic hypotension, and/or confusion [4, 5]. SSRIs have also been associated with an increased risk of fractures, due to an increased tendency to falls [5, 6]. In addition, the recent description of functional serotonin transporters in osteoblasts, osteoclasts, and osteocytes raises the possibility that serotonin transporters may play a role in bone metabolism and that medications that affect these transporter systems may also affect bone metabolism [9–11, 60].

Despite emerging evidence suggesting antidepressant medications as potential risk factors for osteoporotic fractures, significant limitations persist in the literature. As is the case in any observational study of adverse events of drugs, even when controlling for a large number of risk factors, the possibility of confounding due to unmeasured risk factors remains. A particular concern is confounding by indication which may affect the results of this meta-analysis. In fact, confounding by indication may be an important cause of the observed association since the medications are often prescribed for depressive symptom which have been associated with lower BMD, increased risk of falls, and increased risk of fractures in some studies [61–71]. A decrease in BMD during a depression may be the consequence of immobilization during the disease rather than an effect of the prescribed antidepressants per se. The disease or its

complications rather than the drug may therefore be responsible for the increased fracture risk. This would lead to an exaggeration of the effect of antidepressants on fracture risk. In our subgroup analysis, the increase in fracture risk associated with any antidepressant, SSRI, and TCA persist when the analysis was confined to the studies that adjusted for depression, although it was less pronounced to that observed in the overall analysis. This result suggests that antidepressants may exert an increased risk of fracture independent of depression. In addition, we observed a less pronounced increase in fracture risk in the studies that adjusted for BMD.

Moreover, although confounding variables were adjusted in most of the studies included in this meta-analysis, the types of confounders varied among the trials. It seems that no consensus exist in the covariates used in risk adjustment. Many investigations have been performed using administrative [26, 28, 31, 33, 36, 37, 45, 46] that do not contain objective measures of variables that may confound or modify the relationships between medication use and risks for fracture, such as cognition, depressive symptoms, physical function, and bone mineral density [33, 36, 40, 45]. In addition, medical conditions associated with increased loss of BMD, such as chronic obstructive pulmonary disease, liver disease, and diabetes mellitus may predispose to depression and subsequent prescription of antidepressants [72–80]. Although controlling for such factors is possible, it is difficult to control for their severity. However, as our assessment of study quality included adjustment for known confounders, the bias due to residual confounding may be partially captured in our analysis.

Another concern about studies in the literature pertains to the assessment of medication use. Indeed, many studies have been performed using administrative databases providing records that medications were dispensed but not that they were actually consumed, thereby may lead to potential misclassification of exposure. Moreover, others have relied on participating subjects' self-report of medication use. In addition, various methods for assessing depression were used in the studies published and some studies may not account for chronicity and severity of prior depression. Most population-based studies have relied on measures of depressive symptoms rather than actual diagnosis of depression made with diagnostic interviews. This may have introduced bias in the results published.

Our study has some potential limitations. First, the studies included in this meta-analysis mainly focused on evaluating the risk of fracture with use of TCAs or SSRIs, the two most widely prescribed classes of antidepressant medications. Few studies looked at other classes of antidepressants, so that we limited our analyses to these two classes of antidepressants. In this meta-analysis, strong evidence of heterogeneity was present. Indeed, the studies included in our analysis were conducted among participants with

different ethnicities, sexes, ages, durations of antidepressants use, and in different settings with different study designs. Therefore, we used the random effects model instead of the fixed effects. As already mentioned, meta-regression analysis was not performed because of the unavailability of some important variables in the original studies. However, to investigate sources of heterogeneity, subgroup analyses were performed according to demographic or clinical variables such as sex, age, adjustment for BMD or depression, study design, study location, and quality score. However, in most of the subgroups analyses, heterogeneity persisted, except when analyses were restricted for studies which adjusted for depression. This was observed for analyses of risk associated with use of antidepressants as well as for analyses of risk associated with use SSRI or TCA. Moreover, for the analyses of risk of fracture associated with use of SSRI, no evidence of heterogeneity was found when the analyses were restricted to cohort studies, to studies which adjusted for BMD, and to studies limiting to either women or men only. For the analyses of risk of fracture associated with use of TCA, no statistically significant heterogeneity was observed when the analyses were restricted to studies adjusting for BMD and to studies limiting to women only.

Furthermore, we were not able to study the effect of other important sources of heterogeneity such as different doses of psychotropic drugs and duration of use, as information was available in only a few studies. In addition, when there were available, we were unable to assess the effect of these variables because trials reporting this information used mixed categories of defined daily doses or of duration. Lastly, some medications may affect bone strength, such as glucocorticoids. Indeed, the evidence suggests that glucocorticoid-induced osteoporosis is the most common form of secondary osteoporosis and that these drugs are associated with increased risk of fracture [81, 82]. In our meta-analysis, some studies did not control for these drugs, and consequently, we cannot rule out the possibility that the association observed was confounded by these medications, as well as by other concomitant medications, particularly drugs acting on the central nervous system.

Our study has also strength. To our knowledge, this meta-analysis is the first to date to study the effects of both SSRIs and TCAs according to different types of fractures. Moreover, our results are robust and consistent, as shown by our subgroups and sensitivity analysis

Given the high prevalence of antidepressants use among the general population, our findings have a potentially important public health impact. Physicians treating elderly depressive patients should be aware of unfavourable long-term effects associated with these drugs. Our results add to the growing list of problems associated with the use of psychotropic medications in elderly people and suggest that

changes are needed in how doctors manage psychological problems in elderly patients. This study provides further evidence that the sedative and autonomic effects of the two most frequently prescribed antidepressants increase the older patient's risk of falling and subsequent fracture. This underscores the need to consider the potential for increased risk of fracture and other serious fall-related injuries when these drugs are used in geriatric practice. The clinical implication is that older patients starting treatment with either tricyclic antidepressants or selective serotonin reuptake inhibitors will have an increased risk of fracture and that patients should be aware of this increased risk so that they can take appropriate precautions.

A major challenge in future studies addressing the influence of antidepressants on fracture risk is to deal with confounding by indication or severity, a factor which was not adequately controlled for in earlier studies. Further exploration of the role of the confounders, notably targeting the separation of the effects of treatment from the effects of depression, is necessary. More rigorous evaluation of the influence of antidepressants use on fracture adjusting for depressive symptoms, diagnoses of major depression, and other variables that could explain this association is warranted. Further studies are needed to evaluate the relative contribution of disease-related and treatment-related effects to the increased risk of falls and fractures. Additional clinical studies including longitudinal studies of antidepressants, BMD, bone turnover markers, and fracture outcomes would be useful future steps in order to expand our understanding of the possible effects of antidepressants use on bone health.

Conclusion

We conclude from the present meta-analysis that both SSRIs and TCAs are associated with a moderate and clinically significant increase in the risk of fractures of all types. These results are clinically relevant and should be addressed seriously given the high prevalence of use of antidepressants among the general population, and in particular, among the frail older population.

Acknowledgements The authors acknowledge the support by a research grant from the Leon Fredericq Foundation of the Faculty of Medicine of the University of Liège.

Role of funding The funders played no role in study design, data collection, data analysis, data interpretation, or writing of the report.

Conflicts of interest V. Rabenda received research grants from Servier and Nycomed. O. Bruyère received research grants from GlaxoSmithKline, IBSA, Merck Sharp & Dohme, Theramex, Novartis, Pfizer, Rottapharm, and Servier; consulting or lecture fees

from IBSA, Rottapharm, and Servier; reimbursement for attending meetings from IBSA, Merck Sharp & Dohme, Novartis, Pfizer, Rottapharm, Theramex, and Servier. JY Reginster has received consulting fees or paid advisory boards from Servier, Novartis, Negma, Lilly, Wyeth, Amgen, GlaxoSmithKline, Roche, Merckle, Nycomed, NPS, Theramex; lecture fees when speaking at the invitation of a commercial sponsor from Merck Sharp and Dohme, Lilly, Rottapharm, IBSA, Genevrier, Novartis, Servier, Roche, GlaxoSmithKline, Teijin, Teva, Ebewe Pharma, Zodiac, Analis, Theramex, Nycomed, Novo-Nordisk; grant support from Bristol Myers Squibb, Merck Sharp & Dohme, Rottapharm, Teva, Eli Lilly, Novartis, Roche, GlaxoSmithKline, Amgen, Servier.

Appendix

Search strategy for MEDLINE (OVID)

- 1 exp antidepressive agents/
- 2 antidepressive agent\$.tw.
- 3 antidepressant\$.tw.
- 4 anti-depressant\$.tw.
- 5 selective serotonin-reuptake inhibitor\$.tw.
- 6 tricyclic antidepressant\$.tw.
- 7 monoamine oxidase inhibitor\$.tw.
- 8 psychotropic drug\$.tw.
- 9 or/1-8
- 10 exp fractures,bone/
- 11 fracture\$.tw.
- 12 10 or 11
- 13 exp osteoporosis/
- 14 osteoporosis.tw
- 15 13 or 14
- 16 fall\$.tw.
- 17 exp bone density/
- 18 bone density.mp.
- 19 bone loss.mp.
- 20 bone mass.mp.
- 21 17 or 18 or 19 or 20
- 22 9 and 12
- 23 9 and 15
- 24 9 and 16
- 25 9 and 21
- 26 22 or 23 or 24 or 25

References

1. Hayes D (2004) Recent developments in antidepressant therapy in special populations. *Am J Manag Care* 10(suppl 1):S179–S185
2. Rabheru K (2004) Special issues in the management of depression in older patients. *Can J Psychiatry* 49(suppl1):41S–50S
3. Emslie G, Judge R (2000) Tricyclic antidepressants and selective serotonin reuptake inhibitors: use during pregnancy, in children/adolescents and in the elderly. *Acta Psychiatr Scand Suppl* 403:26–34

4. Ray WA (1992) Psychotropic drugs and injuries among the elderly: a review. *J Clin Psychopharmacol* 12:386–396
5. Thapa PB, Gideon P, Cost TW et al (1998) Antidepressants and the risk of falls among nursing home residents. *N Engl J Med* 339:875–882
6. Ruthazer R, Lipsitz LA (1993) Antidepressants and falls among elderly people in long-term care. *Am J Public Health* 83:746–749
7. Woolcott JC, Richardson KJ, Wiens MO, Patel B, Marin J, Khan KM, Marra CA (2009) Meta-analysis of the impact of 9 medication classes on falls in elderly persons. *Arch Intern Med* 169:1952–1960
8. Bloch F, Thibaud M, Dugué B, Brèque C, Rigaud AS, Kemoun G (2011) Psychotropic drugs and falls in the elderly people: updated literature review and meta-analysis. *J Aging Health* 23:329–346
9. Warden SJ, Robling AG, Haney EM, Turner CH, Bliziotes MM (2010) The emerging role of serotonin (5-hydroxytryptamine) in the skeleton and its mediation of the skeletal effects of low-density lipoprotein receptor-related protein 5 (LRP5). *Bone* 46:4–12
10. Haney EM, Warden SJ (2008) Skeletal effects of serotonin (5-hydroxytryptamine) transporter inhibition: evidence from clinical studies. *J Musculoskelet Neuronal Interact* 8:133–145
11. Tsapakis EM, Gamie Z, Tran GT, Adshead S, Lampard A, Mantalaris A, Tsiroidis E (2011) The adverse skeletal effects of selective serotonin reuptake inhibitors. *Eur Psychiatry*. doi:10.1016/j.eurpsy.2010.10.006
12. Diem SJ, Blackwell TL, Stone KL, Yaffe K, Haney EM, Bliziotes MM, Ensrud KE (2007) Use of antidepressants and rates of hip bone loss in older women: the study of osteoporotic fractures. *Arch Intern Med* 167:1240–1245
13. Williams LJ, Henry MJ, Berk M, Dodd S, Jacka FN, Kotowicz MA, Nicholson GC, Pasco JA (2008) Selective serotonin reuptake inhibitor use and bone mineral density in women with a history of depression. *Int Clin Psychopharmacol* 23:84–87
14. Haney EM, Chan BK, Diem SJ, Ensrud KE, Cauley JA, Barrett-Connor E, Orwoll E, Bliziotes MM, Osteoporotic Fractures in Men Study Group (2007) Association of low bone mineral density with selective serotonin reuptake inhibitor use by older men. *Arch Intern Med* 167:1246–1251
15. Ginzburg R, Rosero E (2009) Risk of fractures with selective serotonin-reuptake inhibitors or tricyclic antidepressants. *Ann Pharmacother* 43:98–103
16. Schwan S, Hallberg P (2009) SSRIs, bone mineral density, and risk of fractures—a review. *Eur Neuropsychopharmacol* 19:683–692
17. Haney EM, Warden SJ, Bliziotes MM (2010) Effects of selective serotonin reuptake inhibitors on bone health in adults: time for recommendations about screening, prevention and management? *Bone* 46:13–17
18. Takkouche B, Montes-Martínez A, Gill SS, Etminan M (2007) Psychotropic medications and the risk of fracture: a meta-analysis. *Drug Saf* 30:171–184
19. Liberati A, Altman D, Tetzlaff J, Mulrow C, Gotzsche PC, Ioannidis JPA et al (2009) The PRISMA statement for reporting systematic reviews and meta-analyses of studies that evaluate health care interventions: explanation and elaboration. *J Clin Epidemiol* 62:e1–e34
20. Wells GA, Shea B, O'Connell D, Petersen J, Welch V, Losos M, Tugwell P The Newcastle-Ottawa Scale (NOS) for assessing the quality of nonrandomized studies in meta-analyses. Department of Epidemiology and Community Medicine, University of Ottawa, Canada; http://www.ohri.ca/programs/clinical_epidemiology/oxford.htm
21. Begg CB, Mazumdar M (1994) Operating characteristics of a rank correlation test for publication bias. *Biometrics* 50:1088–1101
22. Egger M, Davey Smith G, Schneider M, Minder C (1997) Bias in meta-analysis detected by a simple graphical test. *BMJ* 315:629–634
23. Orwin R (1983) A fail-safe N for effect size in meta-analysis. *J Educ Stat* 8:157–159
24. Rosenthal R (1979) The 'file drawer problem' and tolerance for null results. *Psychol Bull* 86:638–641
25. Hatal R, Keitz S, Wyer P, Guyatt G, Evidence-Based Medicine Teaching Tips Working Group (2005) Tips for learners of evidence-based medicine: 4. Assessing heterogeneity of primary studies in systematic reviews and whether to combine their results. *CMAJ* 172:661–665
26. Ray WA, Griffin MR, Schaffner W, Baugh DK, Melton LJ 3rd (1987) Psychotropic drug use and the risk of hip fracture. *N Engl J Med* 316:363–369
27. Jensen J, Nielsen LH, Lyhne N, Hallas J, Brøsen K, Gram LF (1991) Drugs and femoral neck fracture: a case-control study. *J Intern Med* 229:29–33
28. Ray WA, Griffin MR, Malcolm E (1991) Cyclic antidepressants and the risk of hip fracture. *Arch Intern Med* 151:754–756
29. Cumming RG, Klineberg RJ (1993) Psychotropics, thiazide diuretics and hip fractures in the elderly. *Med J Aust* 158:414–417
30. Lichtenstein MJ, Griffin MR, Cornell JE, Malcolm E, Ray WA (1994) Risk factors for hip fractures occurring in the hospital. *Am J Epidemiol* 140:830–838
31. Herings RM, Stricker BH, de Boer A, Bakker A, Sturmans F, Stergachis A (1996) Current use of thiazide diuretics and prevention of femur fractures. *J Clin Epidemiol* 49:115–119
32. Gambassi G, Lapane KL, Sgadari A, Bernabei R (1998) Elderly patients, use of antidepressants, and hip fracture. *Lancet* 352(9125):400, author reply 401–2
33. Liu B, Anderson G, Mittmann N, To T, Axcell T, Shear N (1998) Use of selective serotonin-reuptake inhibitors or tricyclic antidepressants and risk of hip fractures in elderly people. *Lancet* 351(9112):1303–1307
34. Wang PS, Bohn RL, Glynn RJ, Mogun H, Avorn J (2001) Zolpidem use and hip fractures in older people. *J Am Geriatr Soc* 49:1685–1690
35. Partanen J, Heikkinen J, Jämsä T, Jalovaara P (2002) Characteristics of lifetime factors, bone metabolism, and bone mineral density in patients with hip fracture. *J Bone Miner Metab* 20:367–375
36. Hubbard R, Farrington P, Smith C, Smeeth L, Tattersfield A (2003) Exposure to tricyclic and selective serotonin reuptake inhibitor antidepressants and the risk of hip fracture. *Am J Epidemiol* 158:77–84
37. Kaye JA, Jick H (2004) Epidemiology of lower limb fractures in general practice in the United Kingdom. *Inj Prev* 10:368–374
38. French DD, Campbell R, Spehar A, Cunningham F, Foulis P (2005) Outpatient medications and hip fractures in the US: a national veterans study. *Drugs Aging* 22:877–885
39. Hugenholtz GW, Heerdink ER, van Staa TP, Nolen WA, Egberts AC (2005) Risk of hip/femur in patients using antipsychotics. *Bone* 37:864–870
40. Vestergaard P, Rejnmark L, Mosekilde L (2005) Reduced relative risk of fractures among users of lithium. *Calcif Tissue Int* 77:1–8
41. Vestergaard P, Rejnmark L, Mosekilde L (2006) Anxiolytics, sedatives, antidepressants, neuroleptics and the risk of fracture. *Osteoporos Int* 17:807–816
42. Bolton JM, Metge C, Lix L, Prior H, Sareen J, Leslie WD (2008) Fracture risk from psychotropic medications: a population-based analysis. *J Clin Psychopharmacol* 28:384–391
43. Perreault S, Dragomir A, Blais L, Moride Y, Rossignol M, Ste-Marie LG, Fernandès JC (2008) Population-based study of the effectiveness of bone-specific drugs in reducing the risk of osteoporotic fracture. *Pharmacoepidemiol Drug Saf* 17:248–259
44. Abrahamsen B, Brixen K (2009) Mapping the prescripiome to fractures in men—a national analysis of prescription history and fracture risk. *Osteoporos Int* 20:585–597

45. van den Brand MW, Pouwels S, Samson MM, van Staa TP, Thio B, Cooper C, Leufkens HG, Egberts AC, Verhaar HJ, de Vries F (2009) Use of anti-depressants and the risk of fracture of the hip or femur. *Osteoporos Int* 20:1705–1713
46. Verdel BM, Souverein PC, Egberts TC, van Staa TP, Leufkens HG, de Vries F (2010) Use of antidepressant drugs and risk of osteoporotic and non-osteoporotic fractures. *Bone* 47:604–609
47. Guo Z, Wills P, Viitanen M, Fastbom J, Winblad B (1998) Cognitive impairment, drug use, and the risk of hip fracture in persons over 75 year old: a community-based prospective study. *Am J Epidemiol* 148:887–892
48. Jacqmin-Gadda H, Fourrier A, Commenges D, Dartigues JF (1998) Risk factors for fractures in the elderly. *Epidemiology* 9:417–423
49. Ensrud KE, Blackwell T, Mangione CM, Bowman PJ, Bauer DC, Schwartz A, Hanlon JT, Nevitt MC, Whooley MA, Study of Osteoporotic Fractures Research Group (2003) Central nervous system active medications and risk for fractures in older women. *Arch Intern Med* 163:949–957
50. Lewis CE, Ewing SK, Taylor BC, Shikany JM, Fink HA, Ensrud KE, Barrett-Connor E, Cummings SR, Orwoll E, Osteoporotic Fractures in Men (MrOS) Study Research Group (2007) Predictors of non-spine fracture in elderly men: the MrOS study. *J Bone Miner Res* 22:211–219
51. Richards JB, Papaioannou A, Adachi JD, Joseph L, Whitson HE, Prior JC, Goltzman D, Canadian Multicentre Osteoporosis Study Research Group (2007) Effect of selective serotonin reuptake inhibitors on the risk of fracture. *Arch Intern Med* 167:188–194
52. Spector W, Shaffer T, Potter DE, Correa-de-Araujo R, Rhona Limcangco M (2007) Risk factors associated with the occurrence of fractures in U.S. nursing homes: resident and facility characteristics and prescription medications. *J Am Geriatr Soc* 55:327–333
53. Cooper C, Jakob F, Chinn C, Martin-Mola E, Fardellone P, Adami S, Thalassinou NC, Melo-Gomes J, Torgerson D, Gibson A, Marin F (2008) Fracture incidence and changes in quality of life in women with an inadequate clinical outcome from osteoporosis therapy: the Observational Study of Severe Osteoporosis (OSSO). *Osteoporos Int* 19:493–501
54. Spangler L, Scholes D, Brunner RL, Robbins J, Reed SD, Newton KM, Melville JL, Lacroix AZ (2008) Depressive symptoms, bone loss, and fractures in postmenopausal women. *J Gen Intern Med* 23:567–574
55. Ziere G, Dieleman JP, van der Cammen TJ, Hofman A, Pols HA, Stricker BH (2008) Selective serotonin reuptake inhibiting antidepressants are associated with an increased risk of nonvertebral fractures. *J Clin Psychopharmacol* 28:411–417
56. Nurminen J, Puustinen J, Piirtola M, Vahlberg T, Kivelä SL (2010) Psychotropic drugs and the risk of fractures in old age: a prospective population-based study. *BMC Publ Health* 10:396
57. Huybrechts KF, Rothman KJ, Silliman RA, Brookhart MA, Schneeweiss S (2011) Risk of death and hospital admission for major medical events after initiation of psychotropic medications in older adults admitted to nursing homes. *CMAJ* 183:E411–E419
58. Diem SJ, Blackwell TL, Stone KL, Cauley JA, Hillier TA, Haney EM, Ensrud KE, Study of Osteoporotic Fractures Research Group (2011) Use of antidepressant medications and risk of fracture in older women. *Calcif Tissue Int* 88:476–484
59. Gagne JJ, Patrick AR, Mogun H, Solomon DH (2011) Antidepressants and fracture risk in older adults: a comparative safety analysis. *Clin Pharmacol Ther* 89:880–887
60. Ducy P, Karsenty G (2010) The two faces of serotonin in bone biology. *J Cell Biol* 191:7–13
61. Diem SJ, Blackwell TL, Stone KL, Yaffe K, Cauley JA, Whooley MA, Ensrud KE, Study of Osteoporotic Fractures (2007) Depressive symptoms and rates of bone loss at the hip in older women. *J Am Geriatr Soc* 55:824–831
62. Eskandari F, Martinez PE, Torvik S, Phillips TM, Sternberg EM, Mistry S, Ronsaville D, Wesley R, Toomey C, Sebring NG, Reynolds JC, Blackman MR, Calis KA, Gold PW, Cizza G, Premenopausal, Osteoporosis Women, Alendronate, Depression (POWER) Study Group (2007) Low bone mass in premenopausal women with depression. *Arch Intern Med* 167:2329–2336
63. Jacka FN, Pasco JA, Henry MJ, Kotowicz MA, Dodd S, Nicholson GC, Berk M (2005) Depression and bone mineral density in a community sample of perimenopausal women: Geelong Osteoporosis Study. *Menopause* 12:88–91
64. Mezuk B, Eaton WW, Golden SH, Wand G, Lee HB (2008) Depression, antidepressants, and bone mineral density in a population-based cohort. *J Gerontol A Biol Sci Med Sci* 63:1410–1415
65. Michelson D, Stratakis C, Hill L, Reynolds J, Galliven E, Chrousos G, Gold P (1996) Bone mineral density in women with depression. *N Engl J Med* 335:1176–1181
66. Robbins J, Hirsch C, Whitmer R, Cauley J, Harris T (2001) The association of bone mineral density and depression in an older population. *J Am Geriatr Soc* 49:732–736
67. Mussolino ME (2005) Depression and hip fracture risk: the NHANES I epidemiologic follow-up study. *Public Health Rep* 120:71–75
68. Coelho R, Silva C, Maia A, Prata J, Barros H (1999) Bone mineral density and depression: a community study in women. *J Psychosom Res* 46:29–35
69. Yazici KM, Akinci A, Sütçü A, Ozçakar L (2003) Bone mineral density in premenopausal women with major depressive disorder. *Psychiatry Res* 117:271–275
70. Whooley MA, Kip KE, Cauley JA, Ensrud KE, Nevitt MC, Browner WS (1999) Depression, falls, and risk of fracture in older women. Study of Osteoporotic Fractures Research Group. *Arch Intern Med* 159:484–490
71. Whooley MA, Cauley JA, Zmuda JM, Haney EM, Glynn NW (2004) Depressive symptoms and bone mineral density in older men. *J Geriatr Psychiatry Neurol* 17:88–92
72. Jorgensen NR, Schwarz P, Holme I, Henriksen BM, Petersen LJ, Backer V (2007) The prevalence of osteoporosis in patients with chronic obstructive pulmonary disease—A cross sectional study. *Respir Med* 101:177–185
73. Vrieze A, de Greef MH, Wijkstra PJ, Wempe JB (2007) Low bone mineral density in COPD patients related to worse lung function, low weight and decreased fat-free mass. *Osteoporos Int* 18:1197–1202
74. van Manen JG, Bindels PJE, Dekker FW, IJzermans CJ, van der Zee JS, Schadé E (2002) Risk of depression in patients with chronic obstructive pulmonary disease and its determinants. *Thorax* 57:412–416
75. Uretmen S, Gol M, Cimrin D, Irmak E (2005) Effects of chronic liver disease on bone mineral density and bone metabolism markers in postmenopausal women. *Eur J Obstet Gynecol Reprod Biol* 123:67–71
76. Bianchi G, Marchesini G, Nicolino F, Graziani R, Sgarbi D, Loguercio C, Abbiati R, Zoli M (2005) Psychological status and depression in patients with liver cirrhosis. *Dig Liver Dis* 37:593–600
77. George J, Ganesh HK, Acharya S, Bandgar TR, Shivane V, Karvat A, Bhatia SJ, Shah S, Menon PS, Shah N (2009) Bone mineral density and disorders of mineral metabolism in chronic liver disease. *World J Gastroenterol* 15:3516–3522
78. Strotmeyer ES, Cauley JA (2007) Diabetes mellitus, bone mineral density, and fracture risk. *Curr Opin Endocrinol Diabetes Obes* 14:429–435

79. Talbot F, Nouwen A (2000) A review of the relationship between depression and diabetes in adults: is there a link? *Diabetes Care* 23:1556–1562
80. Campayo A, de Jonge P, Roy JF, Saz P (2010) Depressive disorder and incident diabetes mellitus: the effect of characteristics of depression. *Am J Psychiatry* 167:580–588
81. Canalis E, Mazziotti G, Giustina A, Bilezikian JP (2007) Glucocorticoid-induced osteoporosis: pathophysiology and therapy. *Osteoporos Int* 18:1319–1328
82. Van Staa TP, Leufkens HG, Abenhaim L, Zhang B, Cooper C (2000) Use of oral corticosteroids and risk of fractures. *J Bone Miner Res* 15:993–1000